

Lake Mary Jane Alliance

Opposition to
Innovation Way East

BCC
June 22, 2010



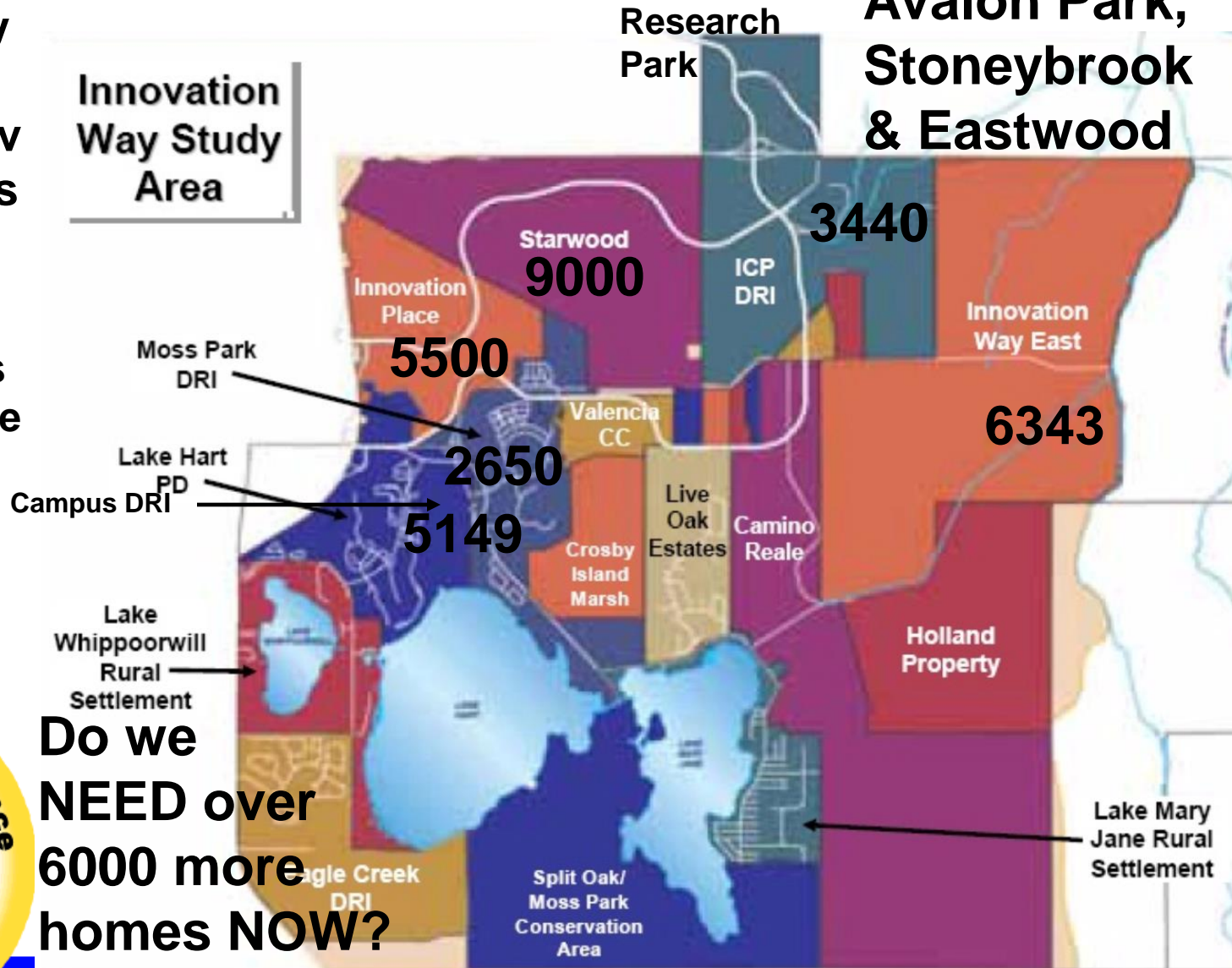
Approved Housing

Housing already approved for Starwood, Innov Place, and ICP is 17,940.

Add in the Lake Hart PD and Moss Park DRI and there are over 25,700 already approved homes. Plus additional homes for sale.



**Do we
NEED over
6000 more
homes NOW?**



**Additional
homes in
Avalon Park,
Stoneybrook
& Eastwood**

Approval of USA expansion at this time would provide inappropriate precedent for further unneeded expansion.

Staff agrees there is no need.

Lake Mary Jane Alliance Members were anonymously surveyed over the weekend and with 186 responses, 70% feel the Urban Service Area should not be expanded and want this project denied,

21% thought a compromise was worth the sacrifice if it completely protected land east of Turkey Creek.

9% percent thought either option above.

0% wanted full approval.

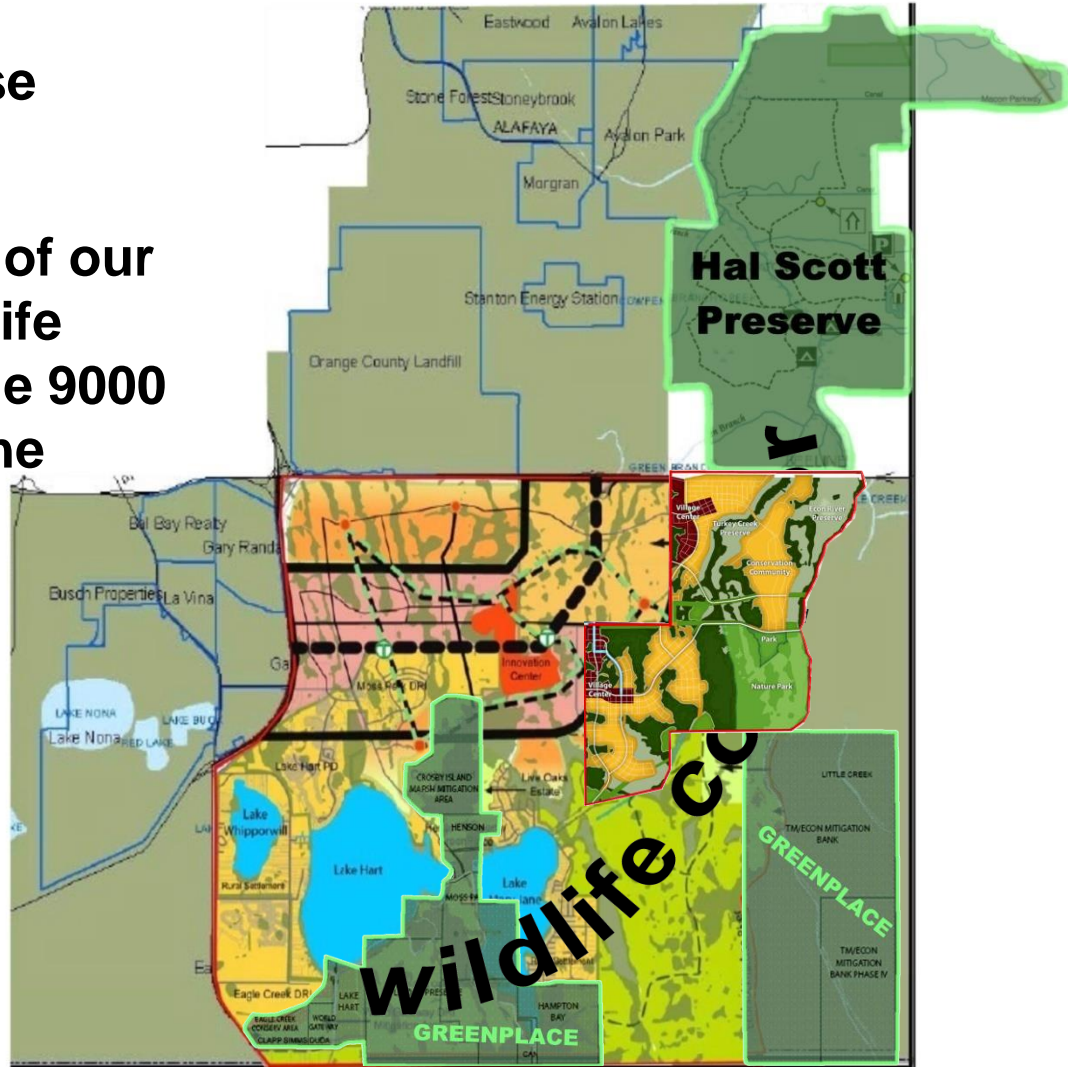


BLOCKS Wildlife Corridor

Orange County Created the GreenPlace program to purchase critical environment land.

The County invested MILLIONS of our tax dollars preserving this Wildlife Corridor. IWE lands connect the 9000 acres of Hal Scott Preserve to the 7000 acres of Moss Park

IWE will severely impact this Wildlife Corridor – Violation of Policy 8.4.1 protecting Wildlife Movement.



"EXHIBIT B"

Development over 1 mile from the corridor
and separated by Turkey Creek is simply

SPRAWL

ECFRPC

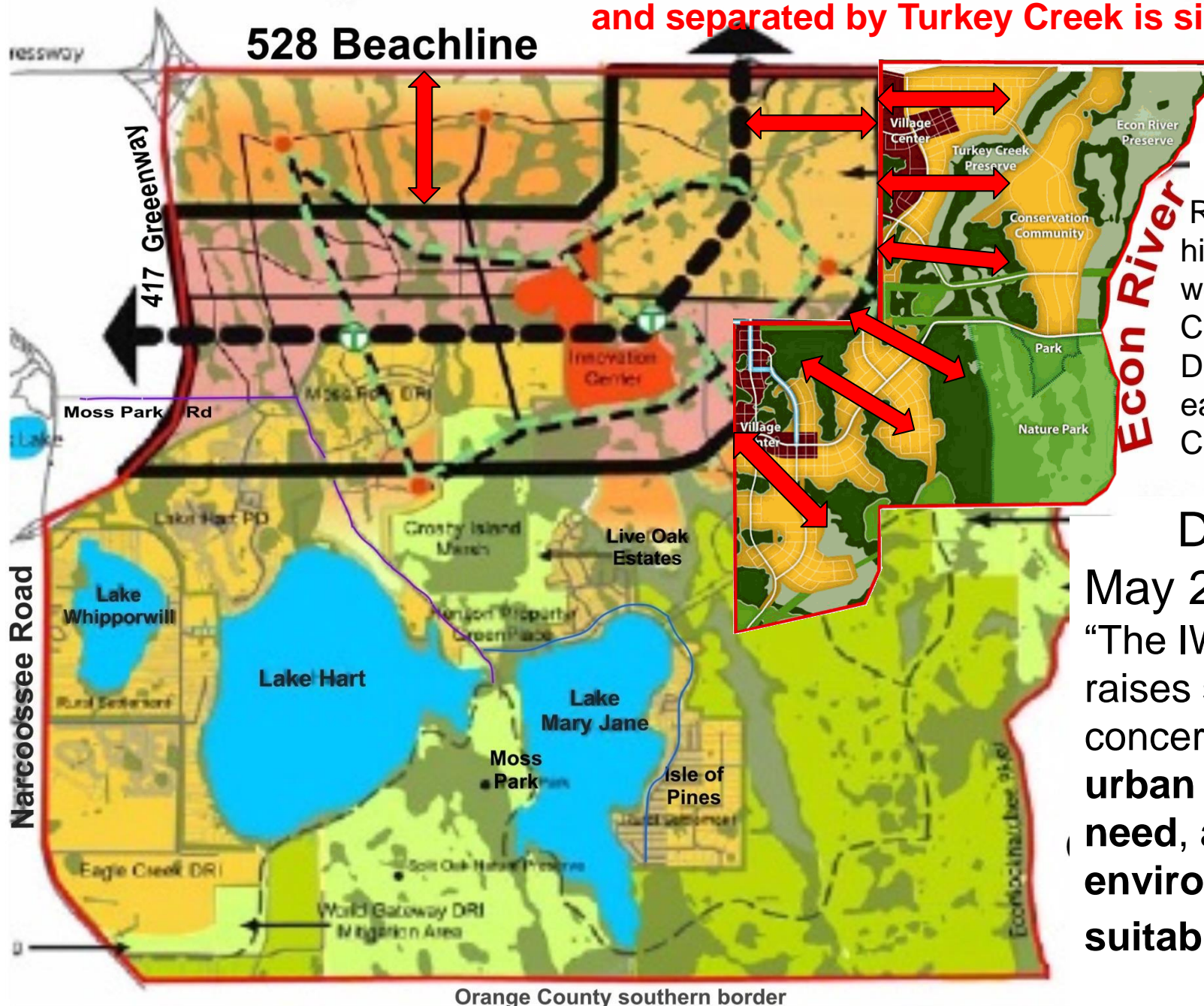
March 2010

Recommended
higher densities
west of Turkey
Creek and NO
Development
east of Turkey
Creek

DCA

May 27 2010

"The IWE DRI
raises significant
concerns regarding
urban sprawl,
need, and
environmental
suitability. . ."



Orange County southern border

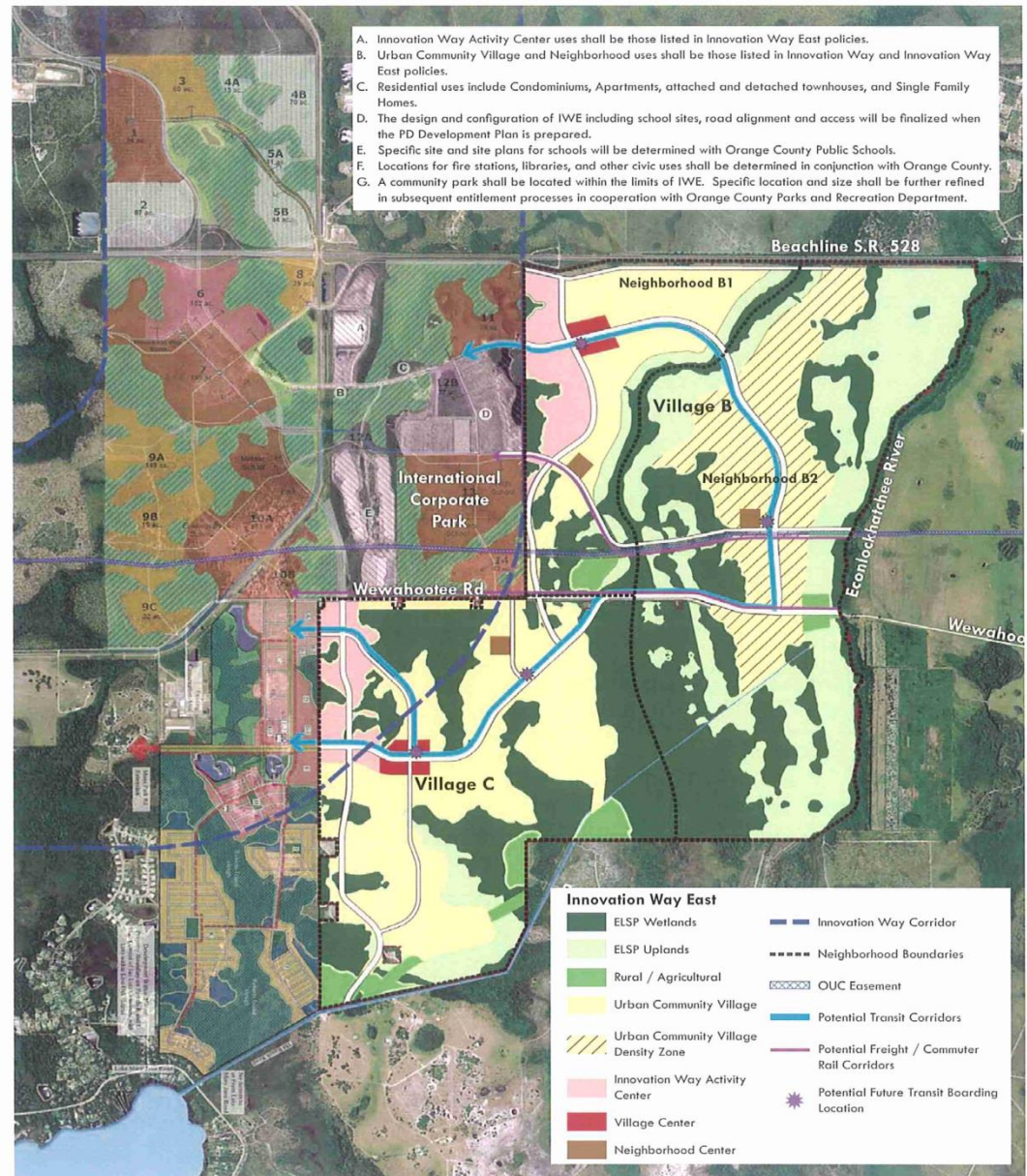
MMTD

East of Turkey Creek?

Why build an expansive
MMTD connection to
serve 535 homes?

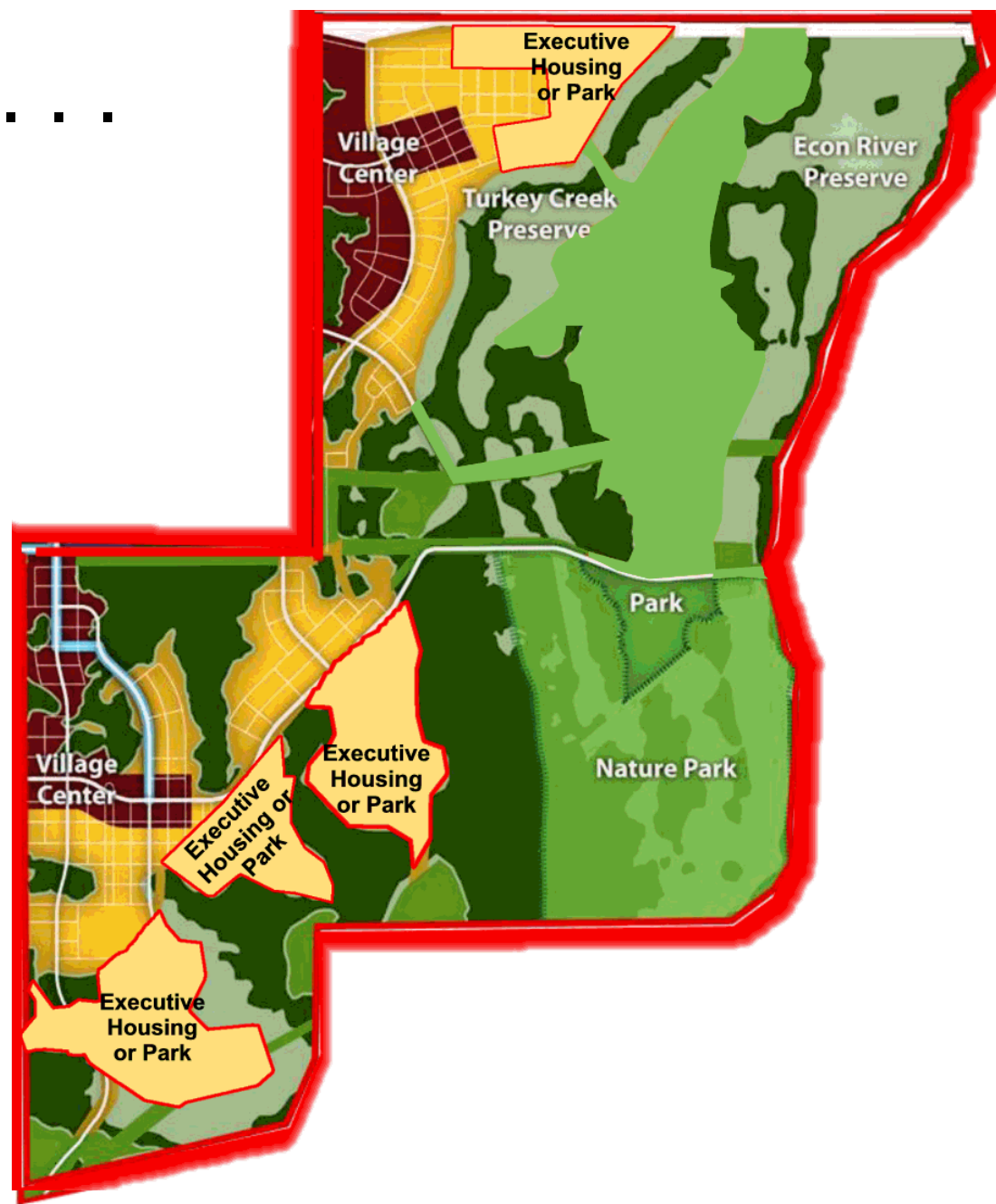
DCA questions this also!

MMTD should also hug
the corridor connecting
the higher densities.



More Acceptable . . .

This would conform IWE to the Innovation Way vision, reduce the area needed to be served by multimodal transportation, give access for a southern connector, reduce the cost to the County of expanding the Urban Service Area, provide for much needed executive housing, and permanently preserve this important wildlife corridor.



You have only one chance to do this right

MAKE A DIFFERENCE

www.LakeMaryJaneAlliance.com

Preserving Rural Florida

